

Opening Preparation Guide for Residential Garage Doors

Name: _____

Date: _____

Address: _____

Home Phone: _____

Work Phone: _____

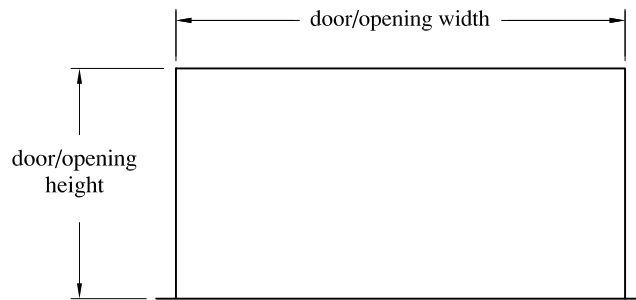
This instruction sheet details opening preparations for your C.H.I. Residential door. Information given here is not meant to infringe upon or supersede any State or County Building Codes or Safety Regulations.

Opening Requirements

Door Width = _____

Door Height = _____

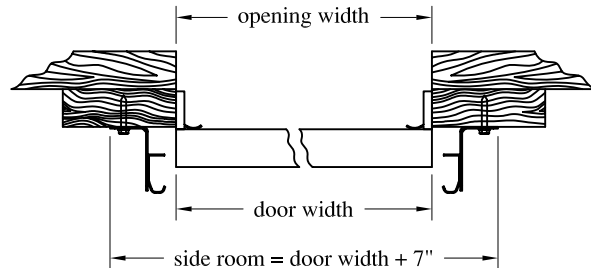
Door width and height should be the same as the opening width and height.



Side Room Requirements

Side Room = _____

Whenever possible allow additional side room for ease of movement during installation.



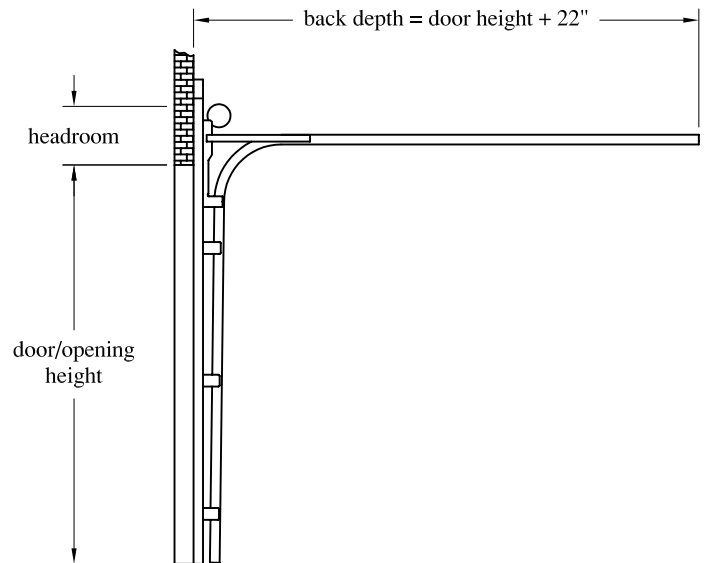
Headroom and Back Depth Requirements

Headroom = _____

Back Depth = _____

track radius	spring type	headroom
12" R	extension	10"
	torsion	12"
15" R	extension	12"
	torsion	15"

Minimum values shown. Whenever possible allow more headroom for ease of installation. Add 2-1/2" to headroom if you are using an electric door opener.



After you have checked that the door will fit, prepare the opening. It is very important that the opening is correctly prepared before installing tracks and springs. All mounting surfaces must be structural components and not covered with drywall, paneling or any other building material. The materials listed here are not supplied with the door.

Torsion Spring Mounting Area is where the torsion springs mount. It must be flush with the header and reinforced to a structural member with (4) 5/16" x 4" wood lags. See table A for height. Minimum 10" wide. (Not required for extension spring doors.)

Header Plate provides a surface for the door to seal against. It must be level and flush with the jamb plates.

Jamb Plates support the door tracks. Make sure that they are plumb and square with the header plate.

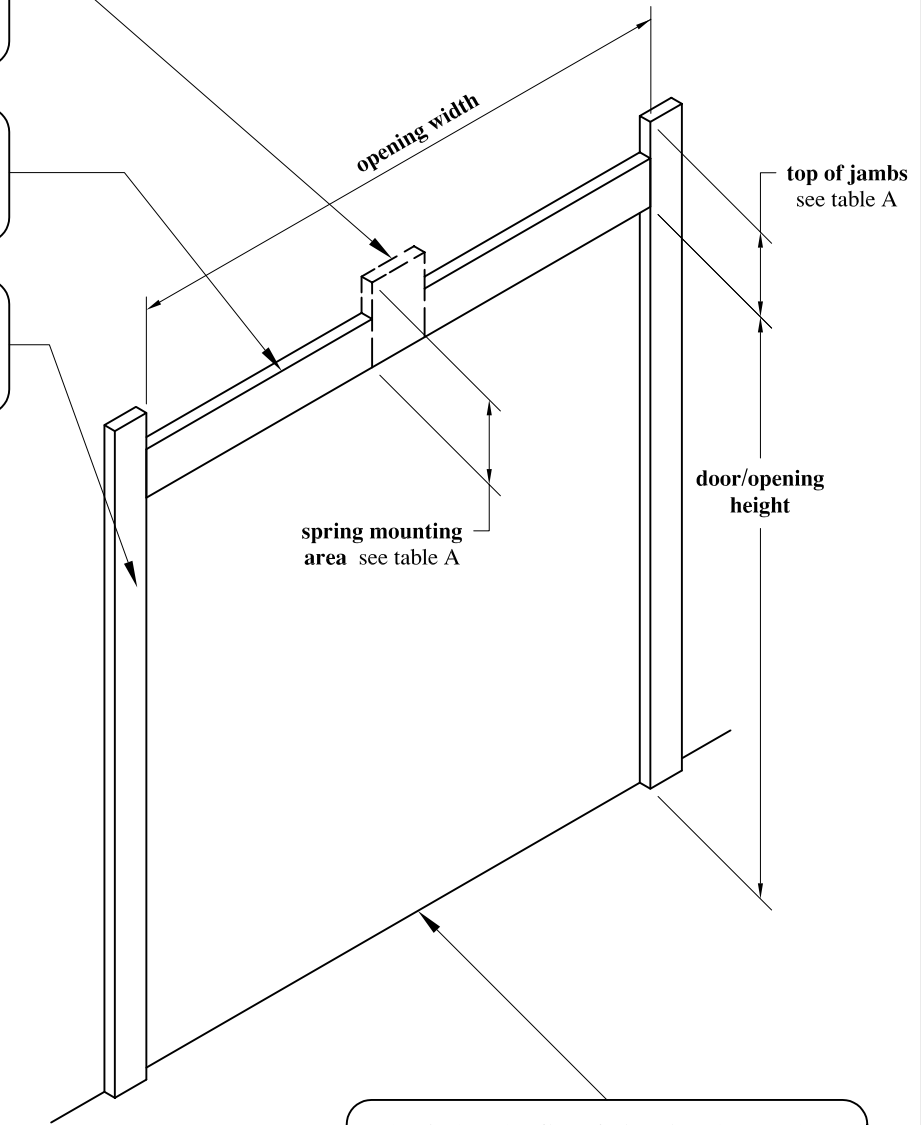
Recommended Wood Framing Sizes

jamb plate	2 x 6
header plate	2 x 8
spring mount	2 x 10

Wood Framing should be Southern Pine or better structural species, grade 2/better, free of cracks, splits and knots.

Table A

track radius	spring type	top of jamb / spring mtg
12" R	extension	8"
	torsion	12"
15" R	extension	11"
	torsion	15"



Check that the floor is level and smooth. The door has a weather seal on the bottom which will adjust to minor irregularities.

Warning! Attachment of jamb plates, header plate and torsion spring mounting area to building framework must provide adequate support to sustain door weight, track and spring assemblies as well as resistance to wind load forces and vibration caused by door operation.